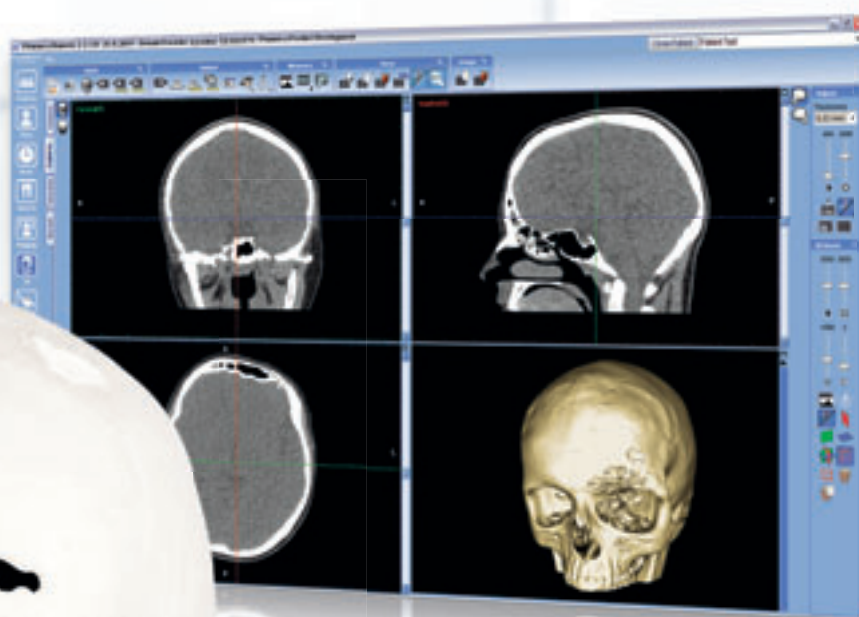




# *Planmeca ProModel*

*For true visualisation*



*Planmeca ProModel is a patient-specific physical model that provides real-size visualisation for demanding oral and maxillofacial surgery. It is created directly from the acquired Planmeca ProMax 3D volume with high-end manufacturing technologies. By concretising the anatomical details of interest, Planmeca ProModel makes the work of dental and medical professionals more straightforward.*

Pure Innovation **PLANMECA**



1.



2.



3.



4.

1. Patient in the postoperative state after extensive tumour removal surgery at maxilla. Planmeca ProModel was used for planning the reconstruction surgery.
2. Stem cell case. Maxilla atrophy due to long-term use of prosthesis. A new maxilla bone was grown inside the patient's back muscle from the patient's stem cells. The surgical team planned the surgery by drawing the operational lines and measuring the bone using Planmeca ProModel. The model was also used for rehearsing the removal of maxilla and for planning the transplantation of the new maxilla.

3. Patient before forehead reconstruction. Planmeca ProModel was used to measure the amount of bone needed for the skullcap. The required bone was transplanted from the patient's own bone.
4. Patient after first reconstruction surgery. Planmeca ProModel visualises the current state of the patient's anatomy and assists in planning the second phase of the reconstruction by helping in bending reconstruction plates and shaping wax templates.



Planmeca ProModel is available in autoclavable material.



Use colour to identify reconstruction plates.



Identify the region of interest.



Available in full colour.



Each model comes with a personal ID.



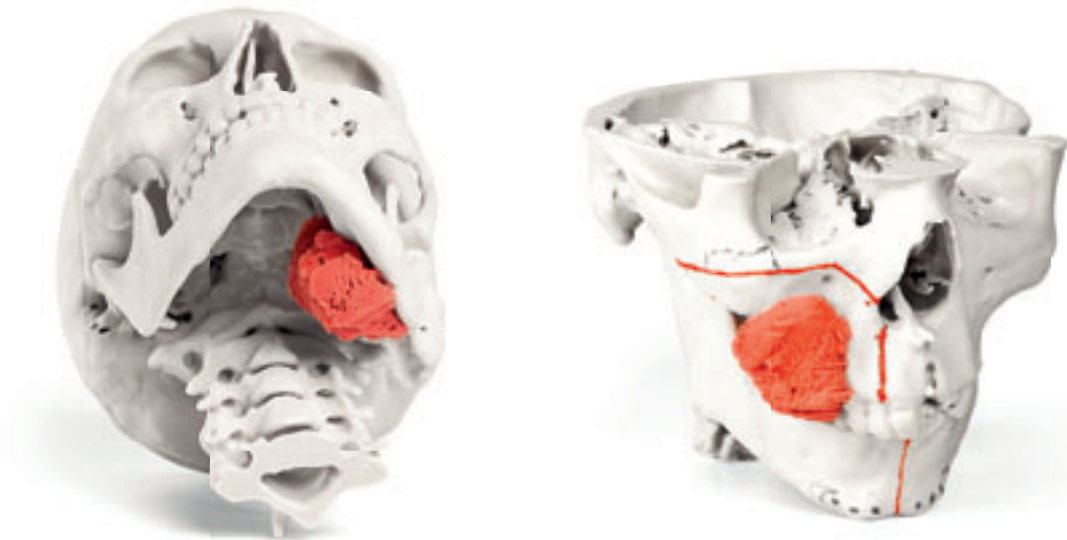
Colour the nerve.



Visualise treatment plan by e.g. adding implant screws.

## *Planmeca ProModel in a nutshell*

- High-precision anatomical model from patient's CBCT or CT data
- Provides comprehensive information prior to actual operation
- Colours available to visualise tumours and other regions of interest
- Better fittings result in improved results: more accurate operations and distinguished aesthetic outcome
- Reduces operation times up to 2 hours and overall costs more than 10 %
- Perfect tool for communicating and turning treatment plans into practice
- Autoclavable Planmeca ProModel for designing bone graft during operations
- Easy ordering options: via the Planmeca Romexis software, using FTP-upload or by sending a CD/DVD
- Fast lead times – from order to delivery in a few business days



Planmeca Oy  
Asentajankatu 6 | 00880 Helsinki | Finland  
tel. +358 20 7795 500 | fax +358 20 7795 555  
sales@planmeca.com | www.planmeca.com

Images may contain optional items not included in standard delivery.  
Rights for changes reserved.